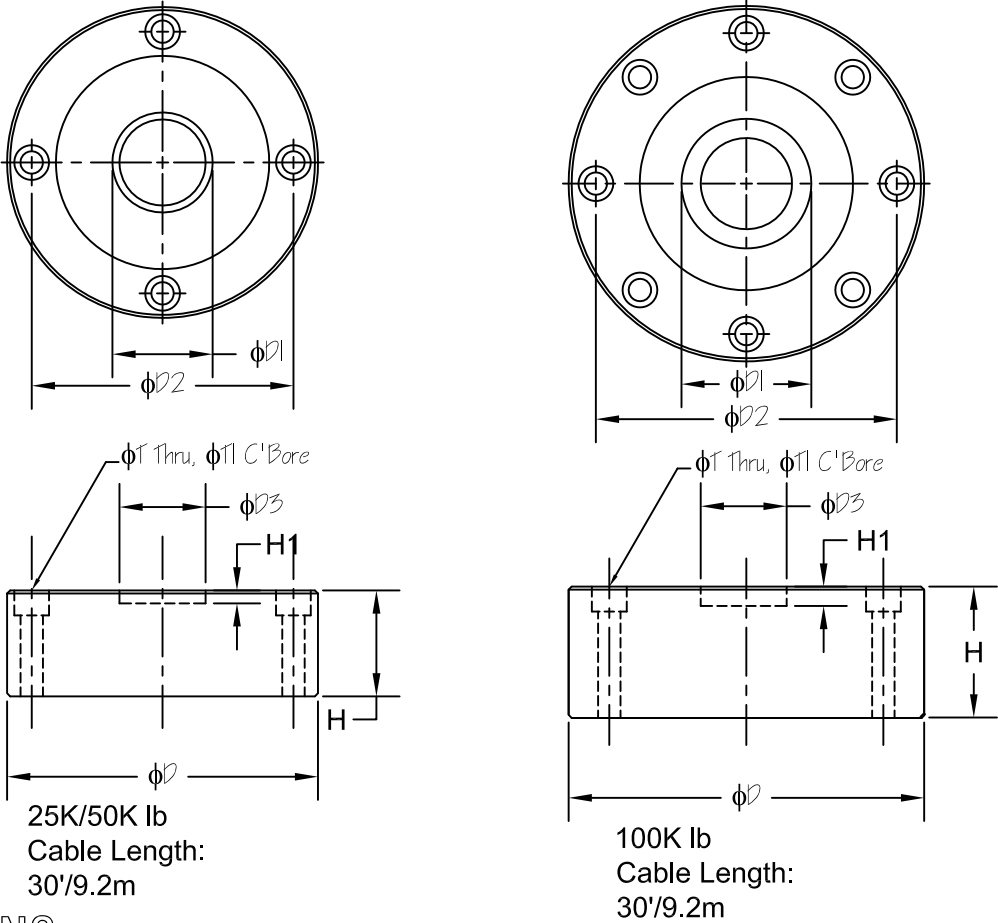


·@k`Dfc4`Y7 ca dfYgg]cb`8]g_`

SPECIFICATIONS: MODEL LCD-**H系列(含:SS)

| | | | |
|---------------------------------------|-------------------|-------------------------------|-----------------|
| Standard Capacity | 25K, 50K, 100K lb | | |
| Recommended Excitation | 10 V AC/DC | Compensated Temp. Range | -10℃ to +40℃ |
| Maximum Excitation | 15 V AC/DC | Operating Temp. Range | -20℃ to +60℃ |
| Output at Rated Load | 3 mV/V ±0.25 % | Zero Balance | ±1% |
| Non Linearity | 0.05% | Input Resistance | 385±5 Ω *1 |
| Hysteresis Error | 0.05% | Output Resistance | 350±3 Ω *2 |
| Non Repeatability | 0.02% | Insulation Resistance (50VDC) | >5000 MΩ |
| Creep (20 minutes) | 0.03% | Deflection at Rated Load | <0.5 mm |
| Zero Return (20 minutes) | 0.03% | Safe Overload | 150% |
| Temp. Effect/ 10℃ on Span | 0.015% | Ultimate Overload | 300% |
| Temp. Effect/ 10℃ on Zero | 0.026% | | |
| 注:*1 100K為770 ±10 Ω; *2 100K 為700 ±5Ω | | | |

OUTLINE:



DIMENSIONS:

| CAPACITY | DIMENSIONS | | | | | | | |
|------------|---------------------------|--------------|---------------|--------------|--------------|-------------|--------------|--------------------------------|
| | D | D1 | D2 | D3 | H | H1 | T | T1 |
| 25K/50K lb | (mm) 120.7 (inch) 4.75 | 38.9 1.53 | 101.6 4.00 | 28.0 1.10 | 41.1 1.62 | 6.0 0.24 | 8.7 0.34 | 13.5 x 9.7DP 0.53 x 0.38DP |
| 100K lb | (mm) 138.0 (inch) 5.43 | 50.4 1.98 | 116.8 4.60 | 53.6 2.11 | 50.8 2.00 | 8.0 0.31 | 10.3 0.41 | 16.5 x 10.2DP 0.65 x 0.40DP |